

The Matrix microprocessor control makes it possible to build centralised granule pneumatic conveyance systems.

The system is flexible and expandable. It is possible to use a maximum of 10 vacuum pumps and 70 receivers at any time, with a single control.

The automatic operation makes it possible to monitor the material storage and distribution, that is to say, the material-processing machine coupling, entirely from a single station. All this can be done easily and without waste of polymers.

Additionally, the “MMS” system makes it possible to choose the conveyance speed according to the type of material to be transported and the distance.



## TECHNICAL CHARACTERISTICS

- Microprocessor/PLC control for 10 vacuum pumps and 70 receivers.
- Portable keyboard with touch screen display.
- Integrated management of:
  - Self-cleaning filters.
  - Proportional valves.
  - Duct cleaning valve.
  - Manual and automatic manifolds.
- The EASY MATRIX version with the control panel integrated in the extraction unit, to control a maximum of 10 containers, is also available.
- All the system components are connected by a serial line.
- Interface 4.0.

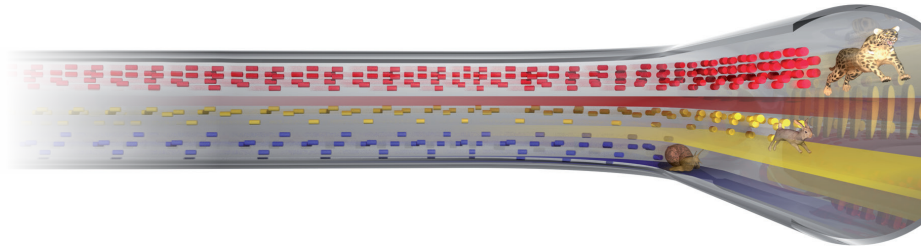
## ACCESSORIES:

- Colour touch screen.
- ABC automatic reserve blower exchange.
- “MMS” material speed management.

## ADDED VALUE:

- Safe conveyance with MMS function, with no polymer degradation or dust generation.
- Total flexibility, open to new storage configurations, production departments, expansions, through a quick configuration of the new system logic controller.
- Simple operator interface from control panel, PC, tablet and receiver.
- Low energy consumption, thanks to efficient vacuum pumps.

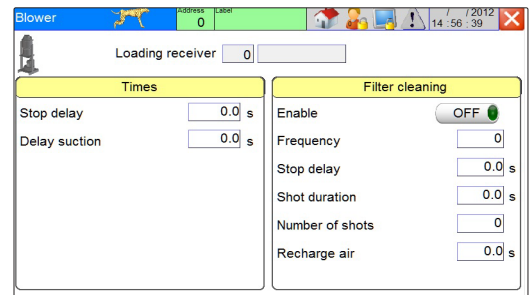
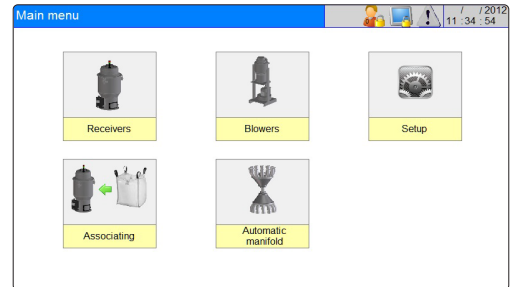
"MMS" material speed management



MATRIX system control unit with handheld device and touch screen



EASY MATRIX system



Touch screen control pages



Example of a Matrix system