

The DM series volumetric feeders are designed for the precise and automatic dosing of masters, additives and regrind.

The synergy between design, applied technology and quality of materials ensures a high flexibility of volumetric feeders, that can therefore be used with injection moulding machines, blow moulding machines and extruders.

TECHNICAL DATA:

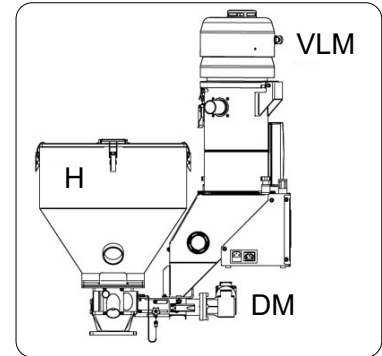
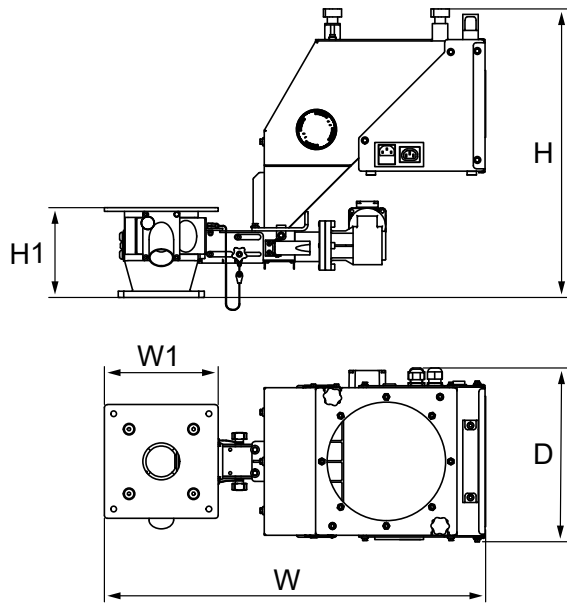
- Brushless motor drive.
- Control panel and LCD display installed directly on the feeder or removable (optional).
- Self-learning calibration and adjustment simply by opening the manually sliding basic module.
- Bottom gate for material unloading.
- Central flanged base, to install up to 2 units.
- Complete with static-type mixer.
- RS 485 Modbus interface.

ADDED VALUE:

- 50-Recipe storage.
- Fast colour change with quick cleaning, thanks to the unit's complete accessibility.
- Wide range of stainless steel dosing screws and easily and quickly exchangeable cylinders.

ACCESSORIES:

- Painted stainless steel central hopper.
- Lack of material alarm with capacitive sensor and buzzer.
- Removable controller kit.
- Bladed mixer body.



	DM5	DM10
Compatible hoppers	H2MC H5MC H15MC	H5MC H15MC H30MC H50MC
Compatible receivers	VENTURI VLM2 VLM4	VENTURI VLM2 VLM4 VLM8

Technical Data

	Screws D x P	Unit of measure	DM5	DM10
Minimum - Maximum output [**]	8x8	Kg/h	0,06-0,84	0,06-0,84
	12x8		0,24-2,8	0,24-2,8
	16x10		0,5-6	0,5-6
	20x12		1-11,7	1-11,7
	20x20		1,4-17,5	1,4-17,5
	25x20		-	2,2-26,5
	30x20		-	3-40
Gear ratio [*]			1:38	1:38
Hopper volume		dm ³	10	14
Dosing unit motor power		kW	0,12	0,12
Motor revolutions		r.p.m.	3000	3000
Mixer motor power		kW	-	0,2
Voltage/Frequency		V/Hz	230/50-60	230/50-60
Noise level		dB (A)	<80	<80
Dimensions WxDxH		mm	620x283x470 146-185	696x283x582 234-140
Weight		kg	27	31

[*] Possible transmission ratios 1:75 - 1:24 - 1:15.

[**] Values obtained with a cylindrical master Ø2x2,5, psa (bulk density) 0.75 kg/dm³.