

- Modular and compact design
- Material hopper made of stainless steel
- With separate blower station
- Cleaning of conveying air filter by means of compressed air
- Bypass valve mounted on the blower
- With bag-type compensating filter
- Operator-friendly  $\mu$ P-controller
- Programmable control functions for
  - conveying
  - filter cleaning
  - proportioning/dosing valve
  - purging valve
- Operating status indicated by LEDs
- End of conveying cycle via time or level
- Connection possibilities for external
  - level switch
  - start/stop switch
  - alarm
- Low-noise operation
- Options:
  - level switch
  - separate controller
  - volume extension
  - central filter



# Hopper Loader FG 425.\_/71

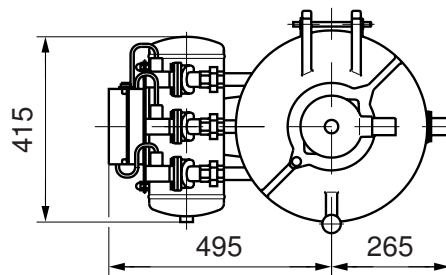
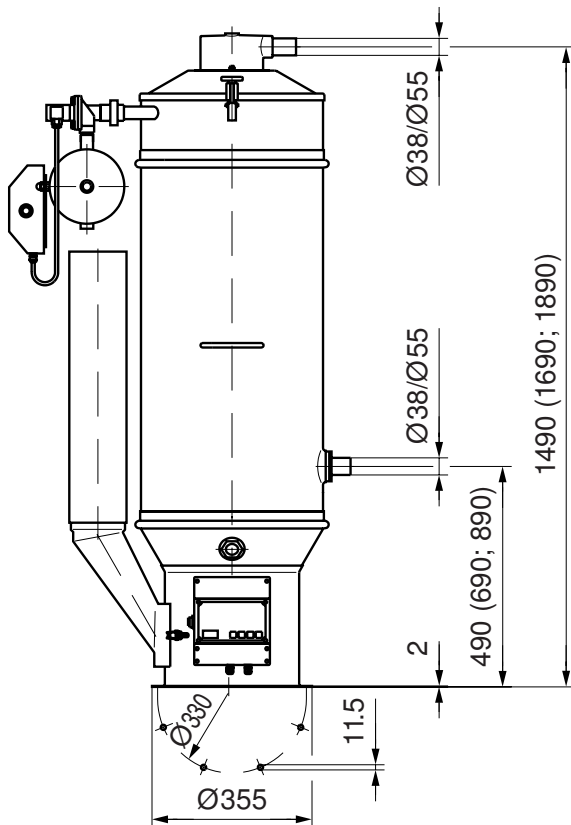
## Application

The FG 425.\_/71 Hopper Loader is used in factories of the plastics, rubber, chemical and recycling industries for the automatic feeding of hoppers, scales, mixers, dosing units and processing

machines with powdery bulk materials. The basic version of the unit consists of a feed station and a blower station.

## Technical data

### Feed station



• Conveying line diameter	mm	Ø 38/ Ø 55
• Material to be conveyed		powder <sup>1)</sup>
• Conveying capacity <sup>2)</sup>	kg/h	max. 600
• Material hopper		
– Material		Stainless steel
– Net volume	l	18 (43; 68)
• Paint (housing attachment)		RAL 5018
• Noise emissions	dB (A)	< 80

• Conveying air filter			
– Version			bag filter
– Material			PET needed felt
– Surface	m <sup>2</sup>		1.0
• Compressed air			
– Pressure	bar		4-6
– Connection			G ½
– Requirement	Nm <sup>3</sup> /h		3.0
• Weight	kg		60 (65; 69)

1) free flowing; PVC Dryblend with a percentage of filler < 10%

(...) with volume extension

2) conveying of PE powder over a distance of 15 m, of which 4 m are vertical

For the technical data of the blower station, please refer to leaflets VKD 425 and VKD 477.