

Gravimetric Dosing and Mixing System

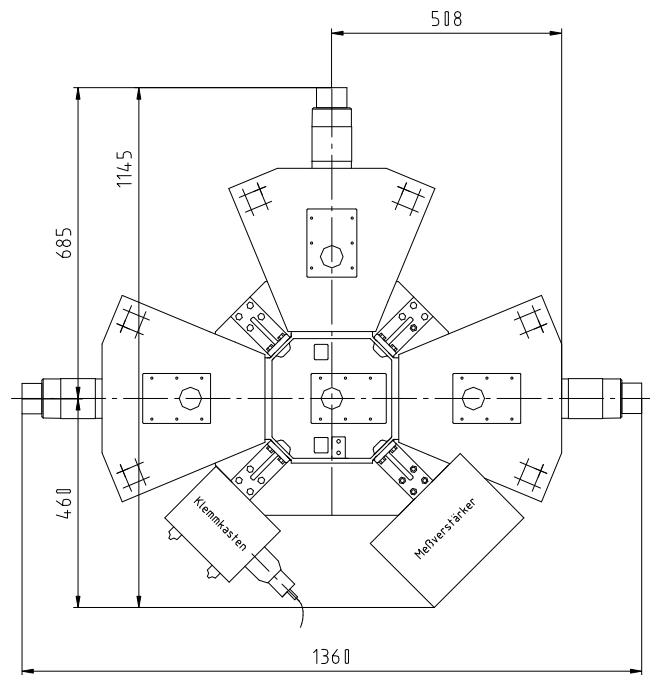
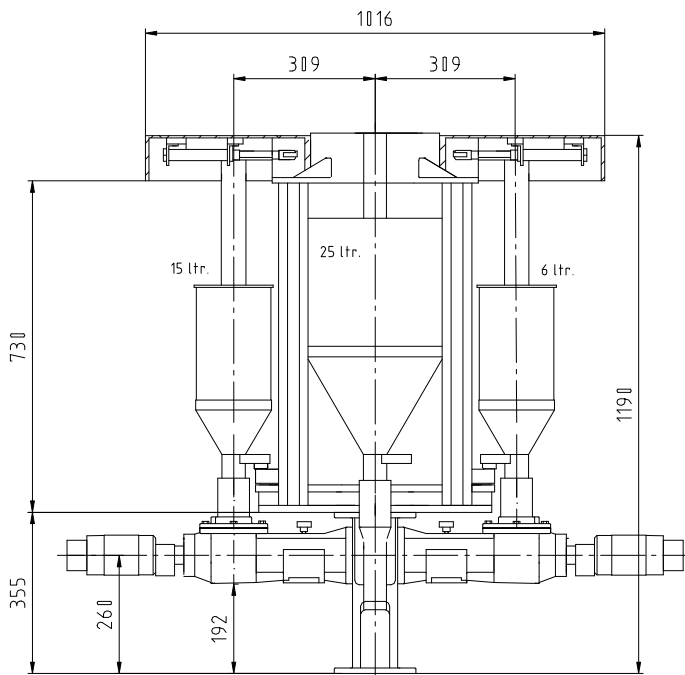
GRAMIX E – Modular

Application

The GRAMIX E - Modular dosing and mixing system is used in the plastics-processing industry for supplying extruders, coextruders and blow-moulding machines in the low and medium throughput ranges with multi-component mixtures that are prepared job-

specifically. The system is suitable for extruder operations both in overfeed and underfeed mode. With this system, all free-flowing bulk materials such as pellets, gravel, regrind or film chips can be dosed and mixed.

Technical Data



• Throughput	kg/h	max. 300
• Dosing accuracy ¹⁾	%	< 0,5
• Weighing hopper – net volume	l	3; 6; 15; 25
• Material		
– mixing support		aluminium cast alloy
– mounting plate		aluminium
– weighing hopper		stainless steel, acrylic glass
– inlet pipe		stainless steel
– upper part		aluminium cast alloy
• Power supply		3 N PE AC50/60 Hz 400 V

• Dosing motors – speed range		1 : 1000
• Load cells		
– nominal load	kg	5; 10; 15
– accuracy ²⁾	%	0,015
• Operating conditions		
– temp. of bulk material ³⁾	°C	max. 80
– ambient temperature	°C	5 to 45
– relative air humidity	%	< 80
• Weight ⁴⁾	kg	max. 140

¹⁾ based on the set throughput

²⁾ based on the nominal load

³⁾ up to 160 °C when using high-temperature version

⁴⁾ dependent on the version and number of dosing stations

Specifications subject to change without notice

VKD 613.2 en 0805 Printed in Germany