

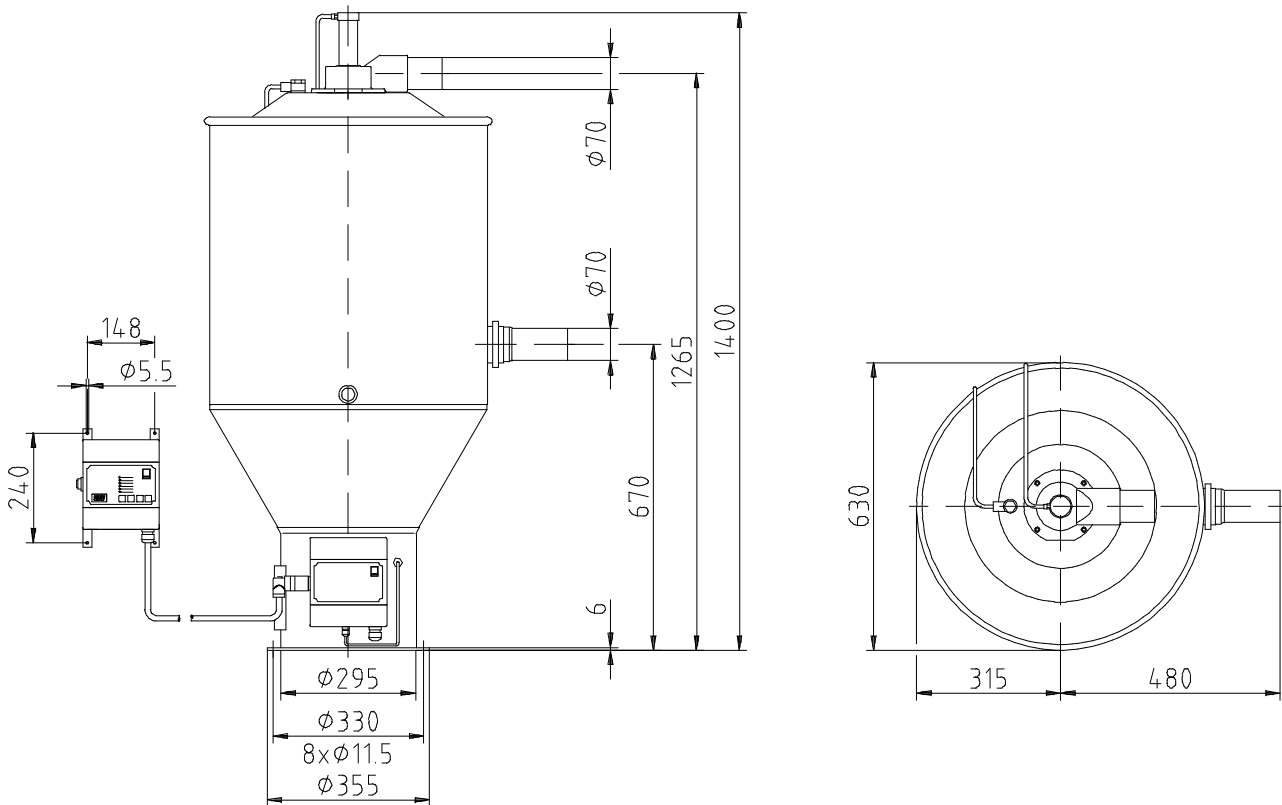
Feed Station FG 624.0/72

Application

The FG 624.0/72 feed station is used in the plastics, rubber, chemical and recycling industries for the automatic feeding of hoppers, scales, mixers, dosing units, drying plants and processing machines with

pellets or regrind. The feed station is used in conjunction with the blower stations BG E76 CPS- and BG E77 CPS-.

Technical Data



• Conveying line diameter	mm	Ø 70
• Material to be conveyed		pellets, regrind
• Conveying capacity ¹⁾	kg/h	max. 2500
• Material hopper		stainless steel
– material		60
– net volume	l	< 80
• Noise emissions	DB(A)	

• Conveying air filter		filtering bag
– version		PA fabric
– material		0.6
– surface	m ²	
• Compressed air		
– pressure	bar	4 – 6
– connection	mm	Ø 16 x 2
– requirement	NI/cycle	16
• Weight	kg	40

¹⁾ conveying of PE pellets over a distance of 15 m, of which 4 m are vertical

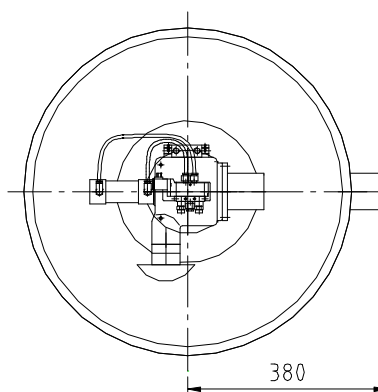
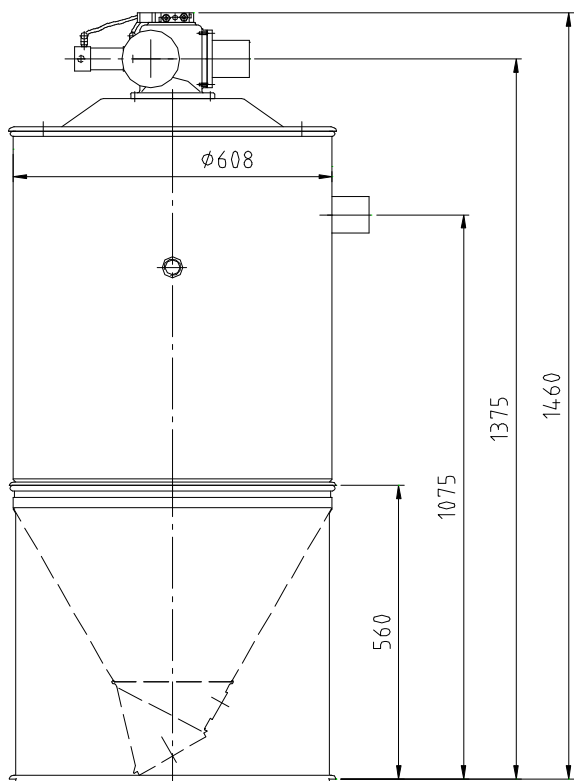
For the technical data of the blower station, please refer to leaflet VKD 458.

Feed Station FGV 643.0/76

Application

The FGV 643.0/76 feed station is used in the plastics, rubber, chemical and recycling industries for the automatic feeding of hoppers, scales, mixers, dosing units, and processing machines with powdery bulk materials.

Technical Data



• Conveying line diameter	mm	$\phi 54 - \phi 84$
• Material to be conveyed		pellets, regrind
• Conveying capacity ¹⁾	kg/h	max. 3000
• Material hopper		
– material		stainless steel
– net volume	l	170
• Compressed air		
– pressure	bar	6
– connection	mm	$\phi 6 \times 1$
– requirement	NI/cycle	1
• Noise emissions	dB(A)	< 80

• Conveying air filter		
– version		filtering plate
– material		stainless steel
– surface	m ²	0.25
• Operating conditions		
– bulk material temperature	°C	max. 100
– ambient temperature	°C	5 – 50
– relative air humidity	%	< 80
• Valve attachment colour		RAL 5018
• Control voltage		PE 24 V DC
• Weight	kg	70

¹⁾ conveying of PE pellets over a distance of 15 m, of which 4 m are vertical