

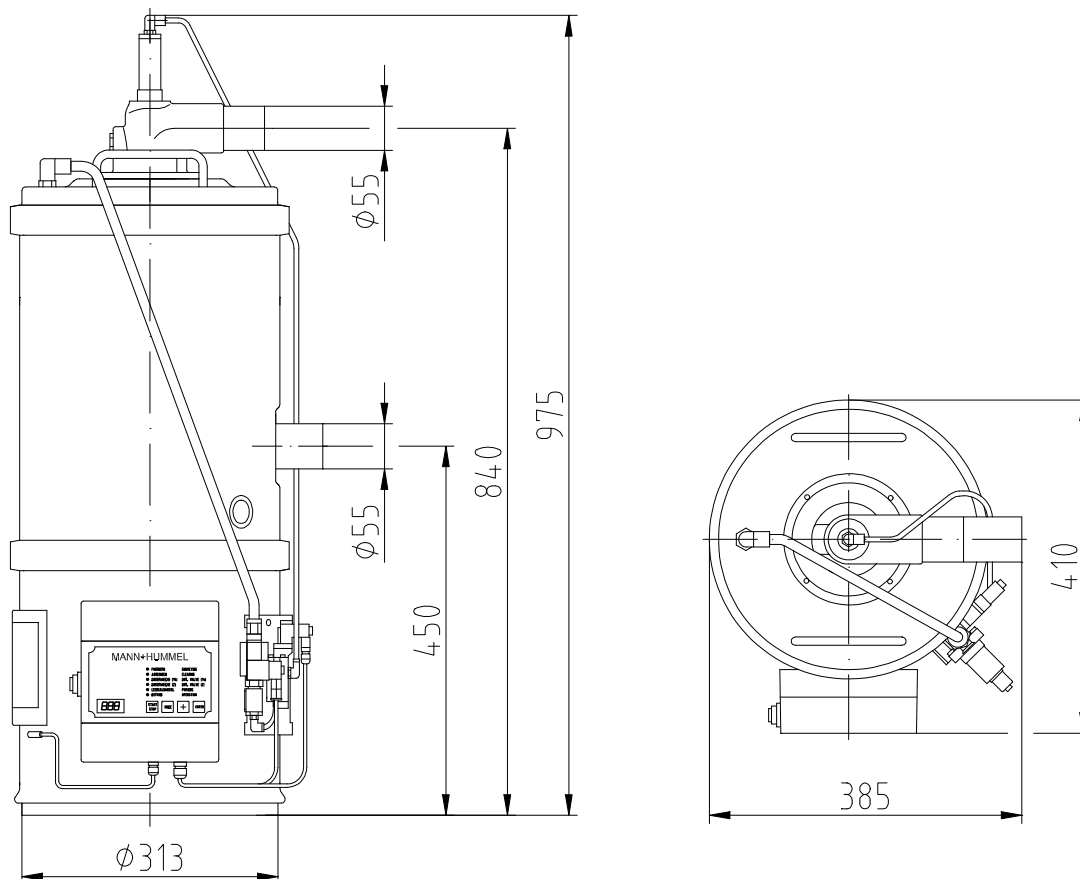
# Feed Station FG 324.0/71 (55)

## Application

The FG 324.0/71 (55) feed station is used in the plastics, rubber, chemical and recycling industries for the automatic feeding of hoppers, scales, mixers, dosing units, drying plants and processing machines

with pellets or regrind. The feed station is used in conjunction with the blower stations BG E/M53 CPS- or BG E/M56 CPS-.

## Technical Data



• Conveying line diameter	mm	Ø 55
• Material to be conveyed		pellets, regrind
• Conveying capacity <sup>1)</sup>	kg/h	max. 1200
• Material hopper		
– material		stainless steel
– net volume	l	12
• Noise emissions	DB(A)	< 80

• Conveying air filter			filtering bag
– version			PA fabric
– material			
– surface	m <sup>2</sup>		0.19
• Compressed air			
– pressure	bar		4 – 6
– connection	mm		Ø 16 x 2
– requirement	NI/cycle		16
• Weight	kg		19

<sup>1)</sup> conveying of PE pellets over a distance of 15 m, of which 4 m are vertical

For the technical data of the blower station, please refer to leaflet VKD 458.