

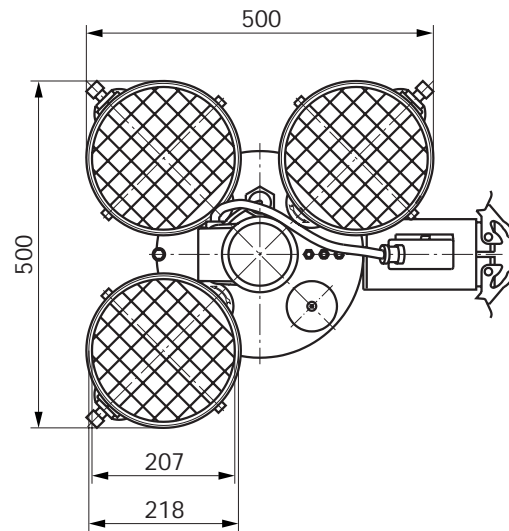
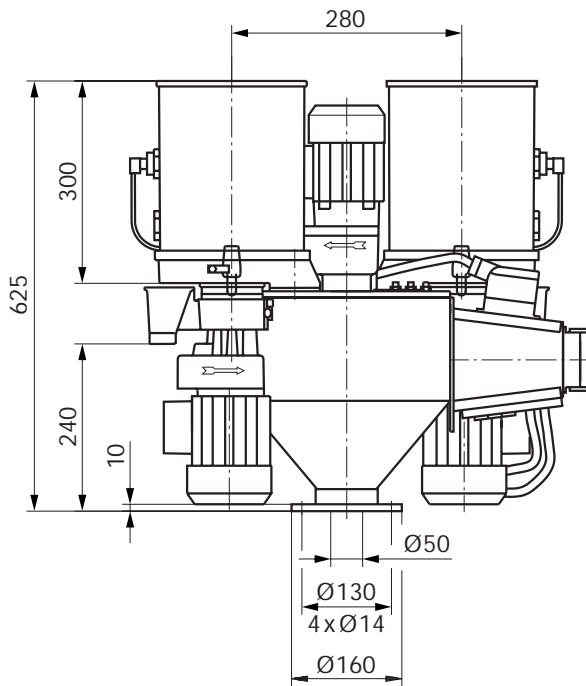
Colouring Equipment EFG 100

Application

The EFG 100 Colouring Equipment is predominantly used in operations in the plastics processing industry for the economical self-colouring of granular or powdery

bulk materials on or next to the processing machine. In exceptional cases, it is also used as a central dosing and mixing station.

Technical data



<ul style="list-style-type: none"> Throughput¹⁾ <ul style="list-style-type: none"> Dosing station with <ul style="list-style-type: none"> - dosing disc Z 0.5 kg/h max. 2.5 - dosing disc Z 1 kg/h max. 5 - dosing disc Z 5 kg/h max. 25 - dosing disc Z 25 kg/h max. 125 - dosing disc Z 32 kg/h max. 160 Dosing accuracy <ul style="list-style-type: none"> - based on 10 chambers % 0.75 - based on 20 chambers % 0.35 Volume <ul style="list-style-type: none"> - Mixing hopper l 11 - Storage hopper l 7.5 Material mixer <ul style="list-style-type: none"> - Mixing hopper stainless steel - Agitator stainless steel - Cover aluminium 		
---	--	--

¹⁾ when dosing material with a bulk density of 0.55 kg/dm³

<ul style="list-style-type: none"> Material dosing unit <ul style="list-style-type: none"> - Storage hopper - Dosing disc - Dosing drum Power supply²⁾ Nominal power <ul style="list-style-type: none"> - Mixer motor <ul style="list-style-type: none"> - low-speed kW 0.09 - high-speed kW 0.75 - Dosing motor kW 0.04 Weight <ul style="list-style-type: none"> - Mixer <ul style="list-style-type: none"> - low-speed kg 20 - high-speed kg 25 - Dosing station kg 14 	PA PA; aluminium aluminium 3 N PE AC 50 Hz 400 V
--	--

²⁾ via the electrical control

Please refer to leaflet VKD 446 for detailed information on the electrical control.

MANN+HUMMEL ProTec GmbH
 A Company of the MANN+HUMMEL Group

Postfach 3 64, 71603 Ludwigsburg, Germany
 Tel. +49 71 41 4 54-0, Fax +49 71 41 4 54-5 00
 E-mail: info@mh-protec.com, www.mh-protec.com



Colouring Equipment EFG 100

- Volumetric, continuously operating dosing and mixing equipment
- Maximum of 4 dosing stations for pellets and powder
- Interchangeable dosing discs with various chamber sizes
- Also for use on injection moulding and blow-moulding machines and extruders
- Menu-driven programmable logic controller
 - configuration
 - parameterization
 - management of formulas
 - sampling
 - control of the dosing and mixing operations
 - recording of consumption
 - display of operating status
- High dosing and mixing accuracy
- Quick, problem-free replacement of storage hoppers when formula is changed; no loss of material
- Manual or automatic supply of material to dosing stations
- Low- or high-speed agitator
- Options:
 - volume extension
 - level switch
 - star shaped agitator and clearing element
 - false base

